



Countering Marauding Attacks (an Organisation's Response)

MTA Guidance

- Joint CPNI/Counter Terrorism Policing guidance, aimed at business, was published earlier in 2019.
- It provides information on protective security measures and operational responses to reduce the vulnerability and consequences of an attack
- Comprises three tiers:
 - Tier 1 for Senior Execs
 - Tier 2, security principles aimed at security practitioners
 - Tier 3, technical supplements (more to follow Spring 2020)
- Copies of the guidance are available from police Counter Terrorism Security Advisors, or via enquiries@cpni.gov.uk (a case must be made to receive a copy)
- A 1 day MTA awareness course is also available via the above channels.

New - MTA Guidance

Tier 1

- Strategic guidance
- Aimed at Board Level

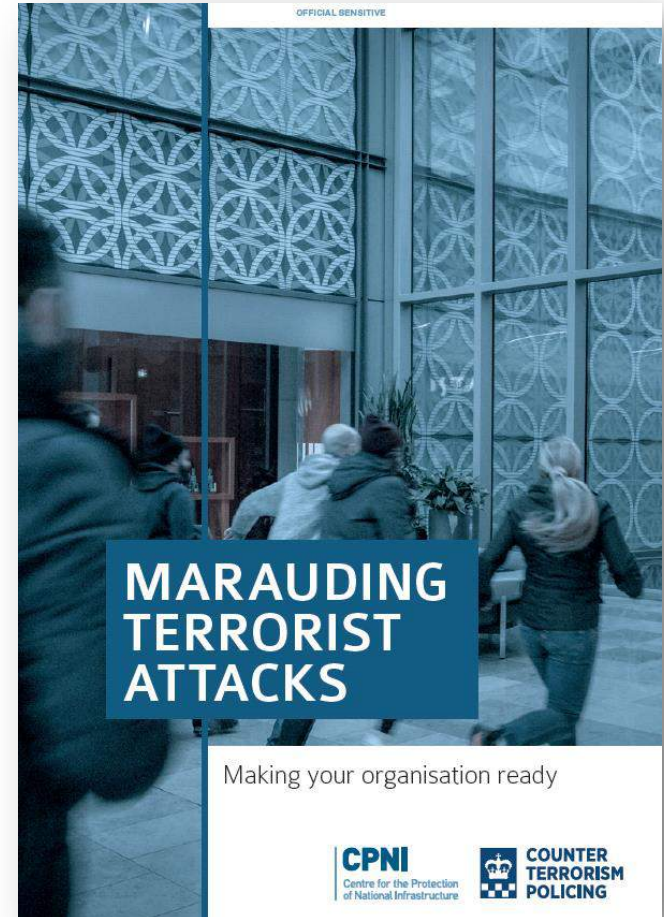
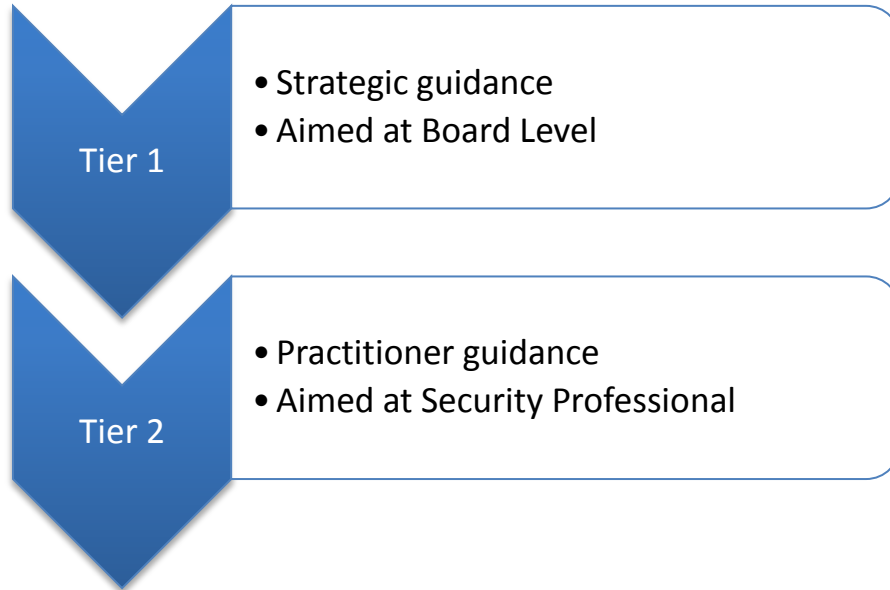
ARE YOU READY?

- ▶ Is your organisation ready **NOW?**
- ▶ Have you got a plan?
- ▶ Is it up to date?
- ▶ Who owns it?
- ▶ Has it been tested?
- ▶ Are your security team trained and capable?
- ▶ Do personnel know how to respond?
- ▶ How do you work with your key partners?
- ▶ Make sure you have the answers!

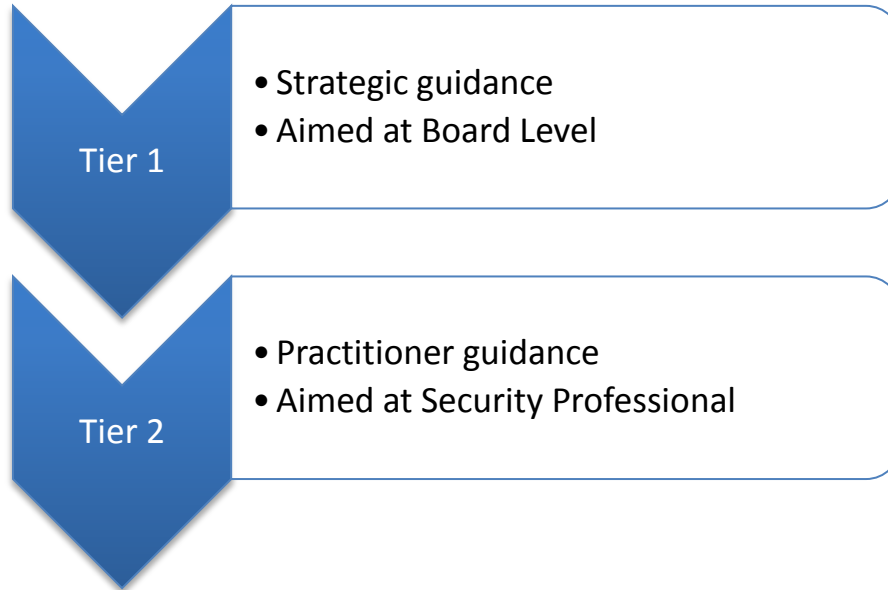
MARAUDING TERRORIST ATTACKS | MAKING YOUR ORGANISATION READY



New - MTA Guidance

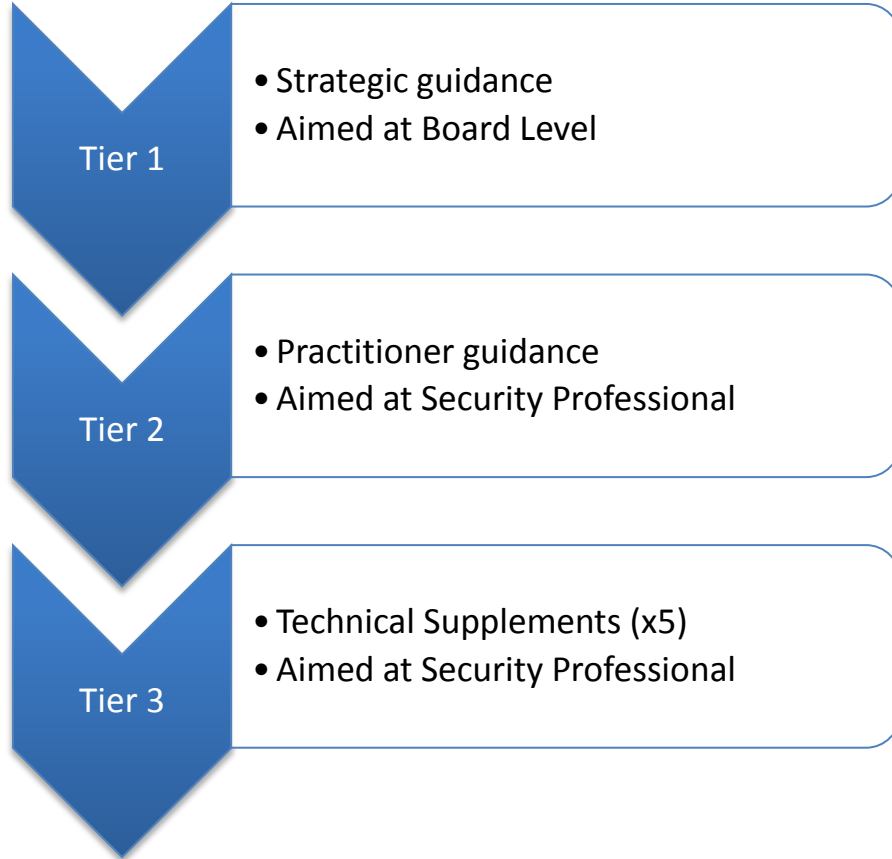


New - MTA Guidance

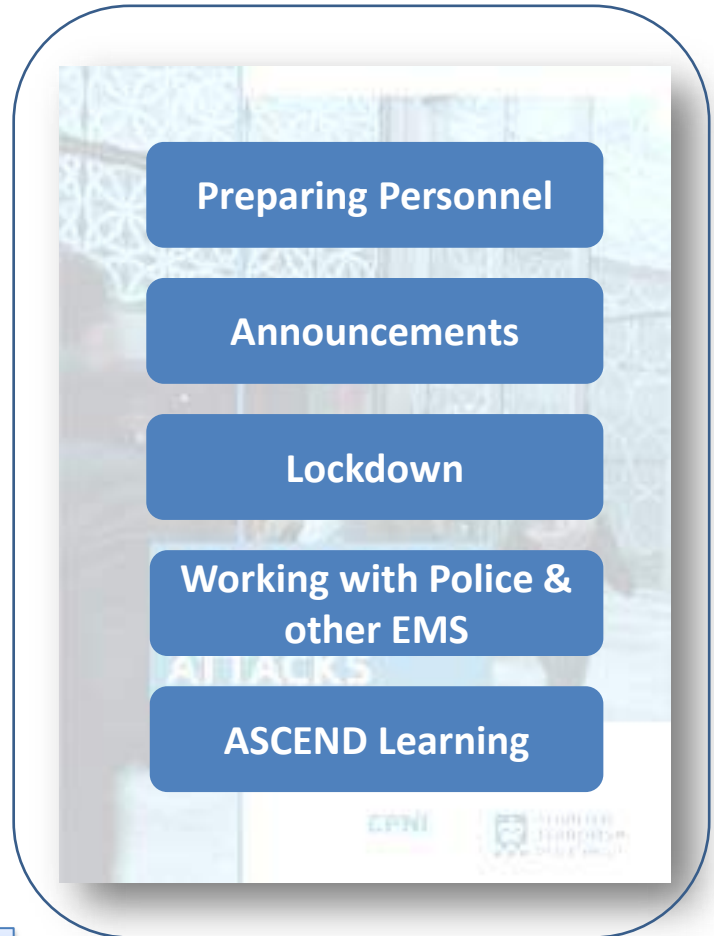


- **Introduction to MTA**
- **Saving lives through your response to an attack**
- **Actions of security and other front line personnel**
- **Effective working in a security control room**
- **Completing critical response tasks without a security control room**
- **Applying 'Run, Hide, Tell' in your organisation**
- **Recovering from a MTA**
- **Making your organisation ready to respond**

New - MTA Guidance



Supported by 1 day Training Course



MTA: Supplementary Guidance – Preparing Personnel

Main discussion points are:

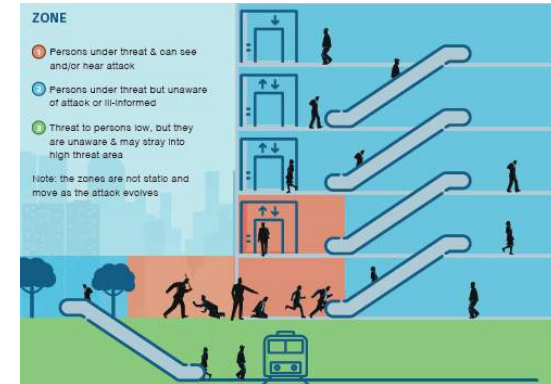
- Developing awareness and training programme
- Preparing general personnel using “Run, Hide, Tell” as applied to an organisation
- Preparing personnel in security control room
- Preparing other personnel with a security role



MTA: Supplementary Guidance – Announcements

Main discussion points are:

- How Public Address and Voice Alarm (PA-VA) systems can be used to support the response to an attack;
- How the type of PA-VA system deployed, and numbers of Security Control Room operators will influence the type of announcements made;
- How people's location will influence their response to announcements;
 - How the style and content of announcements can influence actions;
 - The importance of training, practice and rehearsal.



MTA: Supplementary Guidance – Lockdown

Main discussion points are:

- What lockdown means
- When lockdown can be beneficial
- Where and when lockdown may be impractical
- Planning whether and how lockdown should be used
- Planning considerations for lockdown procedures
- Management of lockdown
- Legislation to be considered when developing lockdown procedures

Terminology

1 Way Lockdown
2 Way Lockdown
Manual Lockdown
Partial Lockdown
Zonal Lockdown
Fail Safe
Fail Secure



CPNI

Centre for the Protection
of National Infrastructure

MTA: Supplementary Guidance

Working with Police and other Emergency Services

Main discussion points are:

- ***Prior to an attack:***
 - Joint understanding of security plans
 - Provision for access and communication
- ***During an attack***
 - Calling 999
 - What to expect when emergency services arrive and what your role is

